

Durable industrial label printers

TJ series

brotherzone.co.uk/sps-zone



**Industrial label printers,
built for you and built
to last**



Brother has been innovating and developing labelling machines for over 30 years, always with the focus of making processes more efficient.

Years of experience in labelling and print, developing products across a wide range of industries, has been channelled into our range of industrial label printers. The TJ series offers high-volume label printing and performance you can rely on.



TJ industrial label printers



Performance and durability you can rely on

The TJ series has been designed to ensure minimal downtime and maximum productivity through fast print speeds, large ribbon capacity and in-built durability, making it perfect for tough production environments.

With stress-free integration and various connectivity options, these durable printers are ready to meet a wide range of requirements. By using the correct ribbon and label combination, users can print labels that will withstand extremes in moisture, durability and chemical resistance.

Always ready when you are, TJ printers can produce more than 1,000 labels a day to meet peaks in demand - whatever the environment.

Industrial label printers designed to meet your requirements

The TJ series has been built to meet your requirements, to provide labelling solutions that are “At your side” every step of the way.

This high-performing range of industrial printers meets the needs of demanding labelling environments, with accessories and software compatibility to ensure we have a solution for your industry’s challenges.

Manufacturing

Our high-volume label printers offer fast print speeds to keep up with the relentless pace of the production line.

Experience performance you can depend on with our easy-to-integrate label printers.

- Packing labels
- Product and parts labels
- Compliance and ratings labels
- Work in progress (WIP) labels

Transportation and logistics

Print easy-to-read text and barcodes, time after time, for your transport and warehouse labelling needs.

With high quality packing and shipping labels, it’s easy to maintain compliance throughout the supply chain.

- Shipping and receiving labels
- Pallet labels
- Product identification labels
- Compliance labels
- Order preparation and picking labels
- Order fulfilment
- Inventory management
- Hazchem labels



“At your side”

Brother TJ printers are always “At your side” with our three-year return-to-base warranty as standard. Our experienced sales and technical support teams are also always on hand to ensure you have a print solution that meets your requirements.



Retail

Ensure a seamless customer experience with our industrial printers supporting your supply chain every step of the way.

Printing product identification labels for sorting at fulfilment centres through to the shipping labels that deliver your products to the end customer.

- Shipping labels
- Returns labels
- Product labels
- Click and collect labels
- Inventory management

Healthcare

Brother offers a range of print solutions from specimen labels through to medicine dosage labels.

Our industrial label printers provide efficient labelling solutions for the medical and pharmaceutical industries, built to meet demand while ensuring traceability.

- Laboratory and blood bank labelling
- Medicine labels
- Asset tracking
- Shipping labels



Features that help get the job done



TJ-4005DN

Integrate with ease

No need to worry about integration, Brother industrial printers support various printer command languages, including ZPL2 emulation.

Minimise downtime and save money

Save workers' time through easy media loading and fewer ribbon^o replacements. Time saved can be spent focusing on the job and working more efficiently - saving money in the long-term.



TJ-4020TN



TJ-4120TN

In-built durability

The industrial-grade printers have been built to last with features such as a metal cover and frame, ensuring you enjoy years of hassle-free label printing, even in tough production environments.



TJ-4021TN



TJ-4121TN

Maximise productivity

Fast print speeds help you keep up with increasing demand, especially when scaling up for peak periods.

With an internal rewinder on selected models, you can also multi-task by sending your labels to print and collecting the ready printed label roll whenever required.



TJ-4420TN



TJ-4520TN

First-class user experience

Range of LED, LCD and touch panel displays available for instant feedback, all designed with the user in mind. Offering an easy-to-use interface for all your setup needs.

Connectivity as standard

Our comprehensive connectivity options offer USB, USB Host, Serial and Ethernet. WiFi and Bluetooth interfaces are also available as an add-on accessory*.



TJ-4422TN



TJ-4522TN

* Purchased separately

^o Excluding TJ-4005DN

TJ Series

brief summary

TJ-4005DN	TJ-4020TN	TJ-4120TN	TJ-4021TN	TJ-4121TN	TJ-4420TN	TJ-4520TN	TJ-4422TN	TJ-4522TN
TJ Series								

Printing

Print technology	Direct Thermal	Direct Thermal and Thermal Transfer				Direct Thermal and Thermal Transfer			
Print resolution	203dpi	203dpi	300dpi	203dpi	300dpi	203dpi	300dpi	203dpi	300dpi
Print speed	6 ips (152mm/sec)	10 ips (254mm/sec)	7 ips (178mm/sec)	10 ips (254mm/sec)	7 ips (178mm/sec)	14 ips (356mm/sec)	12ips (305mm/sec)	14 ips (356mm/sec)	12ips (305mm/sec)
Max print width	107mm	107mm	105.7mm	107mm	105.7mm	104mm			
Max print length	25400mm	25400mm	11430mm	25400mm	11430mm	25400mm	11430mm	25400mm	11430mm
Min print length	5mm					5mm			
Media sensor type	Gap (transmissive), Black mark (reflective), Ribbon encoder (reflective), Ribbon end (transmissive), Head open (transmissive) TJ-4005DN: Gap (transmissive), Black mark (reflective), Head open (transmissive)					Gap transmissive (position adjustable), Black mark reflective (position adjustable), Head open transmissive, Ribbon encoder reflective, Ribbon end transmissive		Gap transmissive (position adjustable), Black mark reflective (position adjustable), Head open transmissive, Ribbon encoder reflective, Ribbon end transmissive, Media near end	
Media sensor location	Adjustable: Gap, Black mark, Fixed: Ribbon encoder, Ribbon end, Head open TJ-4005DN: Adjustable: Gap, Black mark, Fixed: Head open					Adjustable: Gap, Black mark, Fixed: Ribbon encoder, Ribbon end, Head open			
Release mode	Standard: Continuous, Tear off Optional: Peeled, Cut					Standard: Continuous, Tear off Optional: Peeled, Cut		Standard: Continuous, rewinding	

Connectivity

USB	●	●	●	●	●	●	●	●	●
USB host	●	●	●	●	●	●	●	●	●
Serial	●	●	●	●	●	●	●	●	●
Bluetooth (option)*						●	●	●	●
Wired LAN	●	●	●	●	●	●	●	●	●
Wireless LAN (option)	●	●	●	●	●	●	●	●	●

General

Dimensions (mm)	248mm (W) x 274mm (H) x 436mm (D)				276mm (W) x 326mm (H) x 502mm (D)		276mm (W) x 412mm (H) x 502mm (D)	
Weight	9.2kg Peeler mode: 9.9kg Cutter mode: 9.6kg Gross weight: 11.2kg			9.4kg Peeler mode: 10.1kg Cutter mode: 9.8kg Gross weight: 11.4kg		15.35kg Peeler mode: 16.4kg Cutter mode: 16.9kg		18.93kg
Control panel	4 intuitive icon indicators, 1 status indicator, 2 buttons (pause, feed)			3.5-inch colour touch display, 1 status indicator, 6 button navigation		LCD display, 1 status indicator, 6 button navigation		Colour touch display, 1 status indicator, 6 button navigation
Touch panel				●	●			● ●
Tear bar	●	●	●	●	●	●	●	
Operating system support	Windows, Linux, MAC, Android and iOS							
Supported Command	FBPL-EZD (EPL2,ZPL2,DPL)					FBPL-EZD (EPL2,ZPL2,DPL)		

* Bluetooth connectivity option is part of the same single module with Wireless LAN.



**Enhance your printer
with optimised
accessories, supplies
and software**

TJ accessories and supplies

Accessories

PA-CU-004 *

Cutter

TJ-4005DN TJ-4020TN
TJ-4120TN TJ-4021TN
TJ-4121TN



PA-CU-005 *

Cutter

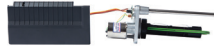
TJ-4420TN
TJ-4520TN



PA-LP-005 *

Peeler

TJ-4005DN TJ-4020TN
TJ-4120TN TJ-4021TN
TJ-4121TN



PA-LP-006 *

Peeler

TJ-4420TN TJ-4520TN



PA-WI-002

WLAN Interface
(WiFi)

TJ-4005DN TJ-4020TN
TJ-4120TN TJ-4021TN
TJ-4121TN



PA-WB-001

Dual Interface
(WiFi and Bluetooth)

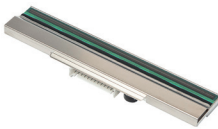
TJ-4420TN TJ-4520TN
TJ-4422TN TJ-4522TN



BPA-HA2L-004 *

Thermal Print
Head (203 dpi)

TJ-4005DN
TJ-4020TN
TJ-4021TN



BPA-HA2M-004 *

Thermal Print
Head (203 dpi)

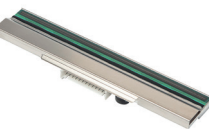
TJ-4420TN
TJ-4422TN



BPA-HA3L-004 *

Thermal Print
Head (300 dpi)

TJ-4120TN
TJ-4121TN



BPA-HA3M-004 *

Thermal Print
Head (300 dpi)

TJ-4520TN
TJ-4522TN



BPA-PRL-004 *

Platen Roller

TJ-4005DN TJ-4020TN
TJ-4120TN TJ-4021TN
TJ-4121TN



BPA-PRM-004 *

Platen Roller

TJ-4420TN TJ-4520TN
TJ-4422TN TJ-4522TN



* Dealer installable only

Supplies

Supplies	Part code	Description	Size	Compatible models
Labels	BUS-1J074102-203	Uncoated thermal transfer die cut labels	102mm x 74mm	TJ-4020TN, TJ-4021TN, TJ-4120TN, TJ-4121TN, TJ-4420TN, TJ-4520TN, TJ-4422TN, TJ-4522TN
Labels	BUS-1J150102-203	Uncoated thermal transfer die cut labels	102mm x 150mm	TJ-4020TN, TJ-4021TN, TJ-4120TN, TJ-4121TN, TJ-4420TN, TJ-4520TN, TJ-4422TN, TJ-4522TN
Labels	BCS-1J074102-203	Coated thermal transfer die cut labels	102mm x 74mm	TJ-4020TN, TJ-4021TN, TJ-4120TN, TJ-4121TN, TJ-4420TN, TJ-4520TN, TJ-4422TN, TJ-4522TN
Labels	BCS-1J150102-203	Coated thermal transfer die cut labels	102mm x 150mm	TJ-4020TN, TJ-4021TN, TJ-4120TN, TJ-4121TN, TJ-4420TN, TJ-4520TN, TJ-4422TN, TJ-4522TN
Ribbon	BWS-1D450-110	Standard wax ribbon	110mm x 450m	TJ-4020TN, TJ-4021TN, TJ-4120TN, TJ-4121TN, TJ-4420TN, TJ-4520TN, TJ-4422TN, TJ-4522TN
Ribbon	BWS-1D600-110	Standard wax ribbon	110mm x 600m	TJ-4420TN, TJ-4520TN, TJ-4422TN, TJ-4522TN
Ribbon	BWP-1D450-110	Premium wax ribbon	110mm x 450m	TJ-4020TN, TJ-4021TN, TJ-4120TN, TJ-4121TN, TJ-4420TN, TJ-4520TN, TJ-4422TN, TJ-4522TN
Ribbon	BWP-1D600-110	Premium wax ribbon	110mm x 600m	TJ-4420TN, TJ-4520TN, TJ-4422TN, TJ-4522TN
Ribbon	BSS-1D450-110	Standard wax/resin ribbon	110mm x 450m	TJ-4020TN, TJ-4021TN, TJ-4120TN, TJ-4121TN, TJ-4420TN, TJ-4520TN, TJ-4422TN, TJ-4522TN
Ribbon	BSS-1D600-110	Standard wax/resin ribbon	110mm x 600m	TJ-4420TN, TJ-4520TN, TJ-4422TN, TJ-4522TN
Ribbon	BSP-1D450-110	Premium wax/resin ribbon	110mm x 450m	TJ-4020TN, TJ-4021TN, TJ-4120TN, TJ-4121TN, TJ-4420TN, TJ-4520TN, TJ-4422TN, TJ-4522TN
Ribbon	BSP-1D600-110	Premium wax/resin ribbon	110mm x 600m	TJ-4420TN, TJ-4520TN, TJ-4422TN, TJ-4522TN
Ribbon	BRS-1D450-110	Standard resin ribbon	110mm x 450m	TJ-4020TN, TJ-4021TN, TJ-4120TN, TJ-4121TN, TJ-4420TN, TJ-4520TN, TJ-4422TN, TJ-4522TN
Ribbon	BRS-1D600-110	Standard resin ribbon	110mm x 600m	TJ-4420TN, TJ-4520TN, TJ-4422TN, TJ-4522TN
Ribbon	BRP-1D450-110	Premium resin ribbon	110mm x 450m	TJ-4020TN, TJ-4021TN, TJ-4120TN, TJ-4121TN, TJ-4420TN, TJ-4520TN, TJ-4422TN, TJ-4522TN
Ribbon	BRP-1D600-110	Premium resin ribbon	110mm x 600m	TJ-4420TN, TJ-4520TN, TJ-4422TN, TJ-4522TN

Software support features

Brother provides all the necessary tools required for software developers to integrate printing into their applications.

Label design software

Supplied as standard (via download), you can create your own custom labels with pixel precision by using these powerful software applications. Features include support for a variety of barcode protocols and advanced image dithering to print high quality grayscale images.

Printer commands

With support for ZPL2 emulation and a variety of additional printer command languages, developers can easily integrate printing into existing legacy systems (see specification tables for further details).

Software compatibility

With our TJ series, you have the ability to integrate into market-leading ERP systems and WMS platforms.

Device management

As most printer devices are either used remotely or away from the administrator, it is necessary to maintain control in the form of troubleshooting or updates. The Brother Printer Management Tool can accommodate this requirement, along with a variety of configuration tools and status reporting (Bluetooth connection mode not supported).

Software development kits (SDKs)

Brother can supply a selection of free-of-charge SDKs to give you an easy way of incorporating label printing directly from within your own software programs.

Available from: <https://www.brother.co.jp/eng/dev/>

Printer drivers are available for Windows OS. Software Development Kits (SDKs) can be provided to support Windows, Android and iOS operating systems.*

* Compatibility may vary dependent on model - check TJ Series in detail pages for more information.





TJ Series in detail

TJ-4005DN	TJ-4020TN	TJ-4120TN	TJ-4021TN	TJ-4121TN
TJ Series				

Printing / Media

Print technology	Direct Thermal	Direct Thermal and Thermal Transfer			
Print resolution	203dpi	203dpi	300dpi	203dpi	300dpi
Print speed	6 ips (152mm/sec) Peeler mode: 3 ips Cutter mode: 2 - 6 ips	10 ips (254mm/sec) Peeler mode: 3 ips Cutter mode: 2 - 10 ips	7 ips (178mm/sec) Peeler mode: 3 ips Cutter mode: 2 - 10 ips	10 ips (254mm/sec) Peeler mode: 3 ips Cutter mode: 2 - 10 ips	7 ips (178mm/sec) Peeler mode: 3 ips Cutter mode: 2 - 10 ips
Maximum print width	107mm	107mm	105.7mm	107mm	105.7mm
Maximum print length	25400mm	25400mm	11430mm	25400mm	11430mm
Minimum print length	Continuous: 5mm Tear mode: 50 mm Peeler mode: 25.4mm Cutter mode: 25.4mm				
Media sensor type	Gap (transmissive), Black mark (reflective), Ribbon encoder (reflective), Ribbon end (transmissive), Head open (transmissive) TJ-4005DN: Gap (transmissive), Black mark (reflective), Head open (transmissive)				
Media sensor location	Adjustable: Gap, Black mark Fixed: Ribbon encoder, Ribbon end, Head open TJ-4005DN: Adjustable: Gap, Black mark Fixed: Head open				
Release mode	Standard: Continuous, Tear off Optional: Peeled, Cut				

Media and Ribbon

Media types	Continuous, die-cut, black mark, fan-fold, notch				
Media thickness	0.06 - 0.28mm				
Media width	Tear mode and Peeler mode: 20 - 120 mm Cutter mode: 20 - 114mm				
Media Length	Tear mode: 50 mm - 25400mm Peeler mode: 25.4mm - 152.4mm	Tear mode: 50 mm - 25400mm Peeler mode: 25.4mm - 152.4mm	Tear mode: 50 mm - 11,430mm Peeler mode: 25.4mm - 152.4mm	Tear mode: 50 mm - 25400mm Peeler mode: 25.4mm - 152.4mm	Tear mode: 50 mm - 11,430mm Peeler mode: 25.4mm - 152.4mm
Maximum media diameter	203.2mm (8 inch)				
Core diameter	25.4mm - 76.2mm (1 - 3 inch)				
Ribbon types	-	Wax, Wax Resin, Resin			
Ribbon width	-	40mm - 110mm			

Connectivity

USB	USB 2.0 high speed				
USB host	Stand alone: USB keyboard, USB scanner Storage: USB pen drive, clone and setup				
Serial	RS-232 (Max. 115200 bps)				
Wired LAN	Ethernet 10/100 Mbps ARP, MAC, BOOTP, DHCP, DNS, WINS, FTP SERVER, HTTP server, SNMP client, SMTP client, SNMP V1, Telnet, LPR/LPD, RAW 9100, IPV4, ICMP, IGMP, TCP, UDP				
Wireless LAN	Optional slot-in WLAN interface accessory				
Wireless LAN mode	Compliant to IEEE 802.11 a/b/g/n with dual band support Supports Bandwidth in 5GHz: 20/40 MHz 802.11n Features: 802.11n HT20 Roaming without data lost in AP coverage Protocols: IPv4, ARP, ICMP, UDP, TCP, RAW, DHCP Client, DHCP FQDN Option, Unicast DHCP Offer				
Wireless LAN security	Open, WEP-Open, WPA-PSK/WPA2 (AES and TKIP) Supports 802.11i security WPA2-Enterprise: EAP-FAST, EAP-TTLS, EAP-TLS, PEAPv0,				

TJ-4005DN	TJ-4020TN	TJ-4120TN	TJ-4021TN	TJ-4121TN
TJ Series				

Software

Label editing software	BarTender UltraLite (download only)
MAC printer driver	macOS 10.13x - 10.15x macOS 11, macOS 12
Linux printer driver	Supported 32-bit and 64-bit OS: Ubuntu V11.04-16.04, Fedora 24, SUSE Linux Enterprise Server 12, CentOS Linux 7.2, Red Hat Enterprise 7.3
Windows printer driver	Supported 32-bit and 64-bit OS: Windows 8.1, Windows 10, Windows 11 Server 2012 R2, Server 2016, Server 2019
Setting tool	BPM (Brother Printer Management Tool) Windows 8.1, Windows 10, Windows 11 Windows Server 2012 R2, 2016, 2019 standard versions
Windows SDK	Supported 32-bit and 64-bit OS: Windows 8.1, Windows 10, Windows 11 Server 2012 R2, Server 2016, Server 2019
Android SDK	Brother Print SDK for Android™ TYPE B Supported OS: V8 or later
iOS SDK	Brother Print SDK for iPhone/iPad TYPE B Supported OS: V11 or later
Supported command	FBPL-EZD (EPL2,ZPL2,DPL)

General

Control panel	4 intuitive icon indicators, 1 status indicator, 2 buttons (pause, feed)	3.5-inch colour touch display, 1 status indicator, 6 button navigation
Touchpanel	-	● ●
Tear bar	● ●	● ●
Cutter (dealer installable)	Optional accessory	
Peeler (dealer installable)	Optional accessory	
Power supply	Internal universal switching power supply Input: AC 100-240V, 2A, 50 / 60Hz Output: DC24V, 3.75A, 90W	

Memory

SDRAM	128MB
FLASH	128MB

Environmental

Operating temperature	0 to 40°C
Operating humidity	25% to 85% non-condensing
Storage temperature	-40 to 60° C
Storage humidity	10% to 90% non-condensing

Weight and Dimensions

Weight (without media)	9.2kg	9.4kg
Dimensions	248mm (W) x 274mm (H) x 436mm (D)	

Included Items

In individual carton	Printer, AC Power Cord, Documentation, USB Cable, 1" ribbon paper core TJ-4005DN: Printer, AC Power Cord, Documentation, USB Cable
----------------------	---

TJ Series in detail

TJ-4420TN	TJ-4520TN	TJ-4422TN	TJ-4522TN
TJ Series			

Printing / Media

Print technology	Direct thermal and thermal transfer			
Print resolution	203dpi	300dpi	203dpi	300dpi
Print speed	14 ips (356mm/sec) Peeler mode: Max. 4 ips Cutter mode: 2 - 14 ips	12ips (305mm/sec) Peeler mode: Max. 4 ips Cutter mode: 2 - 12 ips	14 ips (356mm/sec)	12ips (305mm/sec)
Max. print width	104mm			
Max. print length	25.5m	11.43m	25.5m	11.43m
Min. print length	Continuous: 5mm			
Media sensor type	Gap transmissive (position adjustable), Black mark reflective (position adjustable), Head open transmissive, Ribbon encoder reflective, Ribbon end transmissive		Gap transmissive (position adjustable), Black mark reflective (position adjustable), Head open transmissive, Ribbon encoder reflective, Ribbon end transmissive, Media near end	
Media sensor location	Adjustable: Gap, Black mark Fixed: Ribbon encoder, Ribbon end, Head open			
Release mode	Standard: Continuous, Tear off Optional: Peeled, Cut		Standard: Continuous, rewinding	

Media and Ribbon

Media types	Continuous, die-cut, black mark, fan-fold, notch, perforated, tag, care label Peeler mode: regular coated paper			
Media thickness	0.06 - 0.28mm			
Media width	20 - 114mm			
Media length	Tear mode: 5mm - 25,400mm Peeler mode: 12.7mm - 152 mm Cutter mode: 25.4mm - 2,286mm	Tear mode: 5mm - 11,430mm Peeler mode: 12.7mm - 152 mm Cutter mode: 25.4mm - 1,016mm	5mm - 25,400mm	5mm - 11,430mm
Max. media diameter	203.2mm			
Core diameter	38.1mm - 76.2mm			
Ribbon types	Wax, Wax Resin, Resin			
Ribbon width	25.4mm - 114.3mm			

Connectivity

USB	USB 2.0 high speed
USB host	Stand alone: USB keyboard, USB scanner Storage: USB pen drive, clone and setup
Serial	RS-232 (Max. 115200 bps)
Bluetooth	Optional slot-in WiFi and Bluetooth dual interface accessory
Bluetooth profile	v4.2 SPP (Bluetooth classic), GATT (Bluetooth low energy)
Wired LAN	Ethernet, 10/100 Mbps ARP, MAC, BOOTP, DHCP, DNS, WINS, FTP SERVER, HTTP server, SNTP client, SMTP client, SNMP V1, Telnet, LPR/LPD, RAW 9100, IPV4, ICMP, IGMP, TCP, UDP
Wireless LAN	Optional slot-in WiFi and Bluetooth dual interface accessory
Wireless LAN mode	Compliant to IEEE 802.11 a/b/g/n with dual band support Supports Bandwidth in 5GHz: 20/40 MHz Roaming without data lost in AP coverage Protocols: IPv4, ARP, ICMP, UDP, TCP, RAW, DHCP Client, DHCP FQDN Option, Unicast DHCP Offer
Wireless LAN security	Open, WEP-Open, WPA-PSK/WPA2 (AES and TKIP) Supports 802.11i security WPA2-Enterprise: EAP-FAST, EAP-TTLS, EAP-TLS, PEAPv0

TJ-4420TN	TJ-4520TN	TJ-4422TN	TJ-4522TN
TJ Series			

Software

Label editing software	BarTender UltraLite (download only)
MAC printer driver	OS X 10.11.x macOS 10.12.x - 10.15.x
Linux printer driver	Supported 32-bit and 64-bit OS: Ubuntu V11.04-16.04, Fedora 24, SUSE Linux Enterprise Server 12, CentOS Linux 7.2, Red Hat Enterprise 7.4
Windows printer driver	Supported 32-bit and 64-bit OS: Windows 7, Windows 8.1, Windows 10 Server 2012, Server 2012 R2, Server 2016, Server 2019
Setting tool	BPM (Brother Printer Management Tool) Windows 7, Windows 8.1, Windows 10 Windows Server 2012, 2016, 2019 standard versions
Windows SDK	Supported 32-bit and 64-bit OS: Windows 7, Windows 8.1, Windows 10 Server 2012, Server 2012 R2, Server 2016, Server 2019
Android SDK	Brother Print SDK for Android™ TYPE B Supported OS: V5 – V10
iOS SDK	Brother Print SDK for iPhone/iPad TYPE B Supported OS: V9-V13.2
Supported Command	FBPL-EZD (EPL2,ZPL2,DPL)

General

Control panel	LCD display, 1 status indicator, 6 button navigation		Colour touch display, 1 status indicator, 6 button navigation	
Touch panel			●	●
Tear bar	●	●		
Cutter (reseller installable)	Optional accessory	Optional accessory		
Peeler (reseller installable)	Optional accessory	Optional accessory		
Internal rewinder			●	●
Power supply	Internal switching power supply Input: AC 100-240V, 4-2A, 50-60Hz Output: DC 5V, 5A; DC 24V, 7A; DC 36V, 1.4A; Total 243W			

Memory

SDRAM	256MB
FLASH	512MB + (MicroSD Flash memory card reader or Flash memory expansion, up to 32 GB)

Environmental

Operating temperature	0 to 40°C
Operating humidity	25% to 85% non-condensing
Storage temperature	-40 to 60° C
Storage humidity	10% to 90% non-condensing

Weights and dimensions

Weight (without media)	15.35kg	18.93kg
Dimensions	276mm (W) x 326mm (H) x 502mm (D)	276mm (W) x 412mm (H) x 502mm (D)

Included Items

In individual carton	Printer, AC power cord, documentation, USB cable, 1" ribbon paper core
----------------------	--

brother

at your side

Contact:

www.brother.co.uk

Brother UK Ltd

Shepley Street, Audenshaw,
Manchester M34 5JD

Tel: +44(0)161 330 6531