

Professional desktop thermal printers

TD Series datasheet

brother.co.uk/labelling/td-labeller



TD-2 Range

in detail

TD-2020

TD-2120N

TD-2130N

2 Inch

Printing

| | | |
|-----------------------|---|--|
| Print technology | Direct thermal | |
| Print speed | MAX 6 ips (152.4 mm/sec) (*Under Brother standard environment) (Battery option: Max 3 ips (76.2mm/sec)) | |
| Resolution | 203dpi | 300dpi |
| Max. print width | 56mm (2.205 inch) | |
| Max. print length | 1,000 mm (9.37 inch) | |
| Min. print length | 6mm (0.24 inch) | |
| Media sensor type | Gap (transmissive), Bar (reflective) | |
| Media sensor location | Reflective (adjustable), Gap (fixed) | |
| Tear off release mode | Standard: Continuous, Tear off Optional: Not supported | Standard: Continuous, tear off Optional: Peeled |

Media

| | | |
|---------------------|---|--|
| Media types | Receipt (Non-coated & Coated) | |
| Media thickness | 0.058mm - 0.279mm (0.0023 inch to 0.011 inch) | |
| Media width | 19mm - 63mm (0.75 inch to 2.48 inch) | |
| Media length | 12.7 mm - 1,000 mm (0.5 inch to 39.37 inch) | |
| Diameter (max) | 127mm (5 inch) | |
| Core Diameter (max) | 25.4mm (1 inch) | |

Connectivity

| | | | |
|-----------------------|--|---|---|
| USB | | ● | ● |
| Serial | Yes RS232C * Original serial cable (option required) | | |
| Wired LAN | Not supported | 10/100BASE-TX | |
| USB host port | Not supported | Supported only PA-WI-001 (optional) or barcode readers | |
| Bluetooth (option) | | ● | ● |
| Bluetooth profile | — | SPP (Serial Port Profile) / BIP (Basic Imaging Profile) / OPP (Object Push Profile) supported | |
| Wireless LAN (option) | — | IEEE802.11b/g/n (Infrastructure Mode) IEEE802.11b (Adhoc mode) | |
| Wireless LAN security | — | Open System (None/WEP) <Personal mode> Open System (None/WEP) Public Key Authentication (WEP) WPA-PSK/WPA2-PSK (TKIP/AES) <Enterprise mode> LEAP (CKIP) EAP-FAST (TKIP/AES) PEAP (TKIP/AES) EAP-TTLS (TKIP/AES) EAP-TLS (TKIP/AES) | |

General

| | | | |
|--|---|--|---|
| Control panel | | 3 button 2 LED | |
| Touch panel keyboard display with real time clock (option) | | ● | ● |
| Tear bar | ● | ● | ● |
| Peeler | — | Optional | |
| Battery (option) | | ● | ● |
| Battery charging time | — | 180 min. (23°C New battery) | |
| Battery yield | — | 57mm x 200m (1 roll : 5 inch OD roll) * Connected by USB with new battery with full charging. Printed by Brother special data (9% coverage 57mm x 127mm) at 23 degree Celsius (*Under Brother standard environment) | |
| Adapter | | AC adapter (100 - 240 V 50/60Hz) | |

TD-2020

TD-2120N

TD-2130N

2 Inch

Memory

| | |
|-------|------|
| RAM | 32MB |
| Flash | 16MB |

Environmental

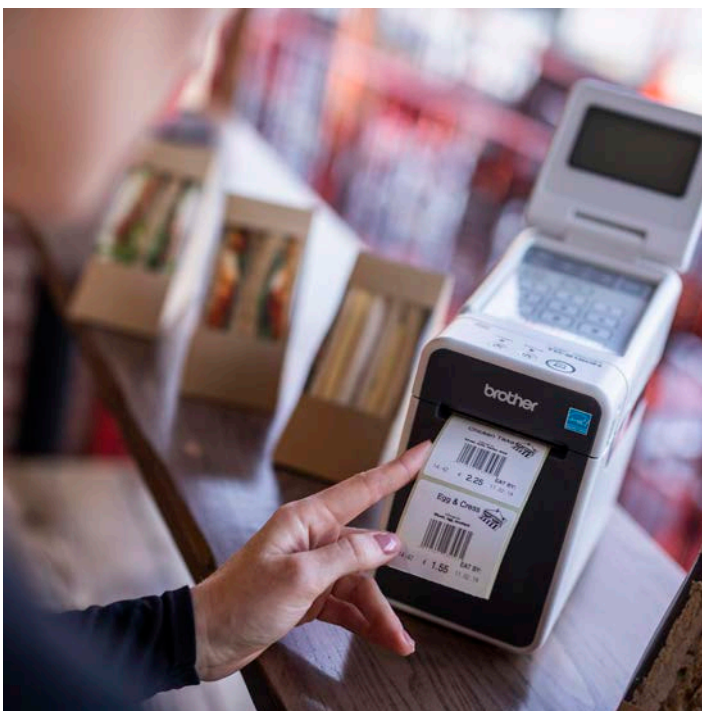
| | | |
|-----------------------|---|--|
| Operating temperature | Operate: 5°C to 40°C | Operate: 5°C to 40°C Charge: 5°C to 40°C |
| Operating humidity | 20 to 80% (No condensation, Maximum wet bulb temperature: 27°C) | |
| Storage temperature | -20°C to 60°C | |
| Storage humidity | 20 to 80% (No condensation, Maximum wet bulb temperature: 45°C) | |

Weights & Dimensions

| | | |
|-----------------|------------------------------------|---|
| Dimensions (mm) | 110mm (w) x 172 mm (h) x 215mm (d) | |
| Weights | Printer: 1.32kg 2.91 pound | Printer: 1.34kg 2.96 pound. Printer with battery: 1.88kg 4.15 pound |

Included Items

| | | |
|-----------------|---|--|
| Supplied in box | Printer | |
| | AC power cord & AC adaptor | |
| | CD (Printer Driver, P-touch Editor 5.0, P-touch Transfer Manager 2.1, P-touch Update Software, Printer Setting tool, User's Guide, Software User's Guide) | CD (Printer Driver, P-touch Editor 5.0, P-touch Transfer Manager 2.1, P-touch Update Software, BRAdmin Light, Printer Setting tool, User's Guide, Software User's Guide, Network User's Guide) |
| | USB Cable (mini-USB) | |
| | Quick Reference Guide. Product Safety Guide (including warranty card) | |



TD-4 Range in detail

TD-4410D

TD-4420DN

TD-4520DN

TD-4550DNWB

TD-4420TN

TD-4520TN

TD-4650TNWB

TD-4750TNWB

TD-4650TNWB
R

TD-4750TNWB
R

4 Inch

Printing

| Print technology | Direct thermal | | | | Thermal Transfer/Direct Thermal | | | |
|-----------------------|---|-----------|---|-----------|---|-------------|--|-------------|
| | Print speed | 203mm/sec | 152mm/sec | 152mm/sec | 127mm/sec | 203.2mm/sec | 152.4mm/sec | 203.2mm/sec |
| Resolution | 203dpi | 300dpi | 203dpi | 300dpi | 203dpi | 300dpi | 203dpi | 300dpi |
| Max. print width | 104.1mm | 108.4mm | 108mm | 105.7mm | 108mm | 105.7mm | 108mm | 105.7mm |
| Min. print length | Continuous: 6.4mm, Peeler: 12.7mm, Cutter: 20mm, Tear: 27mm | | Peeler: 25.4mm, Cutter: 25.4mm Tear: 50mm | | Continuous: 5mm Tear mode: Media width less than 2 inch: 25.4 mm Media width greater than 2 inch: 50 mm Peeler mode: 25.4mm Cutter mode: 25.4mm | | | |
| Max. print length | 3000mm | | 25,400mm | 11,430mm | 25,400mm | 11,430mm | 25,400mm | 11,430mm |
| Media sensor type | Gap (Transmissive), Bar (Reflective) | | | | | | | |
| Media sensor location | Gap (Fixed), Reflective (Adjustable) | | | | | | | |
| Tear off release mode | Standard: Continuous, Tear off Optional: Peeler, Cutter | | | | Standard: Continuous, tear off Optional: Peeler, Cutter | | Standard: Continuous, tear off Optional: Peeler, Cutter* | |

Media

| Media types | Wristbands, Continuous, Die cut, Fan fold, Perforated, Tag | Media type Continuous, black mark, label with gap, notch media, punched hole media | Media type Continuous, black mark, label with gap, notch media, punched hole media, Gen2 RFID tag |
|---------------------|--|--|---|
| Media thickness | 0.058mm - 0.279mm (0.002 inch to 0.011 inch) | 0.06 - 0.19 mm (0.002 inch to 0.007 inch) | |
| Media width | 19mm - 118.11 mm (0.75 inch to 4.65 inch) | 20 - 112mm (0.79 inch to 4.41 inch) | |
| Media length | 6.4mm - 3,000 mm (0.25 inch to 118.11 inch) | 5mm - Max. print length (0.20 inch to Max inch) | |
| Diameter (max) | 127mm (5 inch) | | |
| Core Diameter (min) | 12.7mm (0.5 inch) | 25.4mm & 38.1mm (1.0 inch & 1.5 inch) | 25.4mm & 38.1mm |

Ribbon

| Types | Wax, Wax/Resin, Resin |
|----------------------------------|--|
| Wound type | Outside wound |
| Ribbon width | 40 - 110 mm (1.57 inch to 4.33 inch) |
| Suggested paper core width | 0.5 inch paper core: fixed width 110mm, width 2 notches in each side 1inch paper core: fixed width 110mm with 2 notches in each side 1inch paper core: paper core width is the same as ribbon width and use with ribbon spindles |
| Inner paper core & ribbon length | 0.5 inch paper core: Max. OD 40mm, 110m length 1inch paper core: Max. OD 67mm, 300m length |

Connectivity

| USB | USB version 2.0 (full speed) Type B | | | | USB Version 2.0 (High Speed) | | | |
|-----------------------|-------------------------------------|---|--|----------------------------|------------------------------|---|---|---|
| USB host capability | | | ● | ● | ● | ● | ● | ● |
| Serial | Serial RS232C (DB9 male) | | | Serial RS232C (DB9 female) | Serial RS232C (DB9 female) | | | |
| Wired LAN | 10/100BASE-TX | | | | | | | |
| USB host port | | | ● | ● | ● | ● | ● | ● |
| Bluetooth | — | | Version 4.2 | — | | Version 4.2 | | |
| Bluetooth profile | — | | SPP, OPP, HCRP Bluetooth Classic, GATT (Bluetooth Low Energy) | — | | SPP, Bluetooth Classic | | |
| Wireless LAN | — | | 802.11a/b/g/n | — | | 802.11a/b/g/n | | |
| Wireless LAN security | — | | See model TD-4650TNWB specifications and also includes Wireless direct mode WPA2-PSK (AES) | — | | Authentic method (encryption scheme) Infrastructure mode - Open system (None/ WEP64/WEP128) Common key authentication (WEP) WPA/WPA2 - PSK (TKIP+AES) EAP-FAST (TKIP/AES), PEAP (TKIP/AES), EAP-TLS (TKIP/AES), EAP-TTLS (TKIP/AES) | | |
| MFI support | | | ● | | | | | |
| AirPrint | | | ● | | | | | |
| Wired LAN | ● | ● | ● | ● | ● | ● | ● | ● |

* Not suitable for RFID tags

TD-4410D
 TD-4420DN
 TD-4520DN
 TD-4550DNWB
 TD-4420TN
 TD-4520TN
 TD-4650TNWB
 TD-4750TNWB
 TD-4650TNWBR
 TD-4750TNWBR

4 Inch

General

| | | | | |
|---------------|----------------|----------------|-------------------------------|---|
| Control panel | 3 button 3 LED | 7 button 3 LED | 1 button 1 LED with 3 colours | 1 LED with 3 colors, 6 buttons for Navigation, MENU and FEED/PAUSE/SELECT |
| LCD type | — | Mono | — | Colour |

Power

| | | | |
|---------|---------------------------------|---|--|
| Adapter | AC adapter (100 - 240V 50/60Hz) | AC adapter Input: AC 100-240V, 2.0A, 50-60Hz Output: DC24V, 2.5A, 60W, LPS | AC adapter Input: AC 100-240V, 2.0A, 50-60Hz Output: DC 24V, 3.75A, 90W CEC6 compliance |
|---------|---------------------------------|---|--|

Software

| | | | |
|--------------------------|-----------------------------|--|---|
| Operating system support | Windows 7/8/8.1/10 Linux | Windows 7/8/8.1/10 Windows Server 2008/2008R2/2012/2012R2/2016 Linux | Windows 7, 8, 8.1, 10 Windows Server 2008, 2008 R2, 2012, 2012 R2, 2016, 2019 Linux Mac OS v10.6-10.15 |
|--------------------------|-----------------------------|--|---|

| | | | |
|----------------------------|-------------------------|---|--------------------------------------|
| Supported printer commands | P-touch Template, ESC/P | P-touch Template, ESC/P, Raster, ZPL II emulation, CPCL emulation | FBPL-EZD (EPL2, ZPL2, DPL) emulation |
|----------------------------|-------------------------|---|--------------------------------------|

| | | |
|---------------------|---|--|
| Barcode symbologies | Linear: CODE 39, ITF(-2/5), EAN-8(JAN8), EAN-13(JAN13), UPC-A, UPC-E, CODABAR (NW-7), CODE 128, GS1-128 (UCC/EAN 128), GS1 Databar (Standard (Omnidirectional)/ Truncated/Stacked/Stacked Omnidirectional/ Limited/Expanded), CODE93, POSTNET, UPC/EAN EXTENSION, MSI, Intelligent Mail Barcode 2-dimensional: QR Code (model 1, model 2, micro QR), Maxicode, PDF417 (Standard, Truncate, MicroPDF417) Data Matrix (ECC200 Square, ECC200 Rectangular) Aztec | Linear: Code128UCC, Code128 subsets A, B, C, EAN128, Interleaved 2 of 5, Interleaved 2 of 5 with check digit, Code39, Code39 with check digit, Code93, EAN13, EAN8, UPCA, UPCE, EAN and UPC 2 (5) digits add-on, Codabar, Postnet, MSI, MSI with check digit, PLESSEY, China post, ITF14, Code11, TELEPEN, TELEPENN, PLANET, Code49, Deutsche Post Identcode, Deutsche Post Leitcode, LOGMARS 2-dimensional: GS1 DataBar, GS1 DataMatrix, Maxicode, AZTEC, PDF417, QR Code, Micro PDF 417 |
|---------------------|---|--|

| | | |
|----------------|--|--|
| Internal fonts | ESC/P> Bitmap font: LetterGothicBold (16,24,32,48dot), Helsinki (16,24,32,48dot), Brussels (24,32,48dot), Brougham (24,32,48dot), San Diego (24,32,48dot), Gothic (16,24,32dot) Outline font: LetterGothicRegular, Helsinki, Brussels, Gothic (1 - 400dots) <P-touch Template> Outline font: LetterGothicRegular, Helsinki, Brussels, Gothic (1 - 400dots) Downloadable font support* via Font Manager software | 8 alpha-numeric bitmap fonts for FBPL Monotype Image® true type font engine with one CG Triumvirate Bold Condensed scalable font |
|----------------|--|--|

Memory

| | | | |
|-------|-------|-------|-------|
| RAM | 256MB | 64MB | 128MB |
| Flash | 64MB | 128MB | 128MB |

Environmental

| | | |
|-----------------------|--|----------------------------|
| Operating temperature | | Operate: 5°C to 40°C |
| Operating humidity | 20 - 85% (No condensation, Max wet bulb temperature: 27°C) | 25 - 85% non-condensing |
| Storage temperature | -20°C to 60°C | -40°C to 60°C |
| Storage humidity | | 10 - 90% (No condensation) |

Weights & Dimensions

| | | | |
|-----------------|--------------------------|--------------------------|--------------------------|
| Dimensions (mm) | 180(w) x 155(d) x 224(h) | 204(w) x 178(d) x 280(h) | 219(w) x 284(d) x 191(h) |
| Weights | 2.08kg | 2.5kg | 3.0kg |

Included Items

| | | | |
|-----------------|--|---|--|
| Supplied in box | AC adaptor & cord, USB cable, documentations | AC adaptor & cord, USB cable, documentations. Pair of 1" Ribbon spindles for 300M ribbon 1" ribbon paper core | Printer AC code & AC adaptor A pair of 1" Ribbon spindles for 300M ribbon 1" ribbon paper core USB Cable (1.5m) Quick Start Guide Product Safety Guide (including warranty card) |
|-----------------|--|---|--|

TD-2 Accessories and consumable supplies

Brother has designed and engineered a wide range of accessories to help customise the solution to meet your specific labelling requirements. Brother accessories help users equip their device to cope with the specific requirements of use.

Power and additional options

PA-WI-001

Wi-Fi WLAN Interface

TD-2120N
TD-2130N



PA-BI-001

Bluetooth Interface

TD-2120N
TD-2130N



PA-SCA-001

Serial Adapter

TD-2020
TD-2120N
TD-2130N



PA-TDU-001

Touch Panel Display

TD-2120N
TD-2130N



PA-BB-001

Battery Charging Unit*

TD-2120N
TD-2130N



* Requires PA-BT-4000LI

PA-BT-4000LI

Li-ion rechargeable Battery*

TD-2120N
TD-2130N



* Requires PA-BB-001

PA-LP-001

Label Peeler

TD-2120N
TD-2130N



Consumables

RD-S05E1

Die Cut Labels Roll

Label size:
51mm x 26mm
Quantity:
1552 per roll
Colour: white
TD-2020
TD-2120N
TD-2130N



RD-S07E5

Continuous Receipt Roll

Size:
58mm x 86m
Colour: white
TD-2020
TD-2120N
TD-2130N



Wristband options for TD-2130N only

| Wristband Product code | Description | Size | Quantity |
|------------------------|---|------------|----------|
| 8100-11-PDK | CompuBand® adult wristband direct thermal, clasp closure, white. | 29.2 x 2.9 | 150 |
| 8101-11-PDK | CompuBand® adult/paediatric wristband direct thermal, clasp closure, white. | 29.2 x 1.9 | 150 |
| 8102-11-PDK | Conf-Ident® paediatric wristband, direct thermal, clasp closure, white | 26.6 x 2.5 | 150 |
| 8150-11-PDL | ScanBand® adult wristband direct thermal, adhesive closure, white. | 29.2 x 2.5 | 200 |
| 8151-11-PDL | ScanBand® adult/paediatric wristband adhesive closure, white. | 29.2 x 1.9 | 200 |
| 8185-11-PDL | Precision® infant wristband adhesive closure, white. | 20.3 x 2.9 | 200 |
| 8195-11-PDO | TenderCare® Mother-infant wristband set, adhesive closure, white. | 20.3 x 2.9 | 120 |

| Label Product code | Description | Size | Quantity |
|--------------------|---|------------|----------|
| 8100-11-PDK | CompuBand® adult wristband direct thermal, clasp closure, white. | 29.2 x 2.9 | 150 |
| 8101-11-PDK | CompuBand® adult/paediatric wristband direct thermal, clasp closure, white. | 29.2 x 1.9 | 150 |
| 8102-11-PDK | Conf-Ident® paediatric wristband, direct thermal, clasp closure, white | 26.6 x 2.5 | 150 |
| 8150-11-PDL | ScanBand® adult wristband direct thermal, adhesive closure, white. | 29.2 x 2.5 | 200 |
| 8151-11-PDL | ScanBand® adult/paediatric wristband adhesive closure, white. | 29.2 x 1.9 | 200 |
| 8185-11-PDL | Precision® infant wristband adhesive closure, white. | 20.3 x 2.9 | 200 |

TD-4D Accessories and consumable supplies

Brother has designed and engineered a wide range of accessories to help customise your labelling solution. Brother accessories help users equip their device to cope with the specific requirements of use.

TD-4D Additional options

PA-LP-002 Label peeler

TD-4410D
TD-4420DN
TD-4520DN
TD-4550DNWB



PA-CU-001 Cutter

TD-4410D
TD-4420DN
TD-4520DN
TD-4550DNWB



PA-HU2-001 Thermal print head (203dpi)

TD-4410D
TD-4420DN



PA-HU3-001 Thermal print head (300dpi)

TD-4520DN
TD-4550DNWB



PA-PR2-001 Platen roller (203dpi)

TD-4410D
TD-4420DN



PA-PR3-001 Platen roller (300dpi)

TD-4520DN
TD-4550DNWB



TD-4D Consumables

| RD rolls | Size | Label quantity | Colour | Item no |
|-------------------------|---------------|----------------|--------|----------|
| Continuous receipt roll | 102mm x 27.7m | n/a | White | RD-M01E5 |
| Continuous receipt roll | 76mm x 35.3m | n/a | White | RD-P08E5 |
| Continuous receipt roll | 58mm x 86m | n/a | White | RD-S07E5 |
| Continuous receipt roll | 58mm x 12m | n/a | White | RD-R03E5 |
| Continuous label roll | 102mm x 44.7m | n/a | White | RD-S01E2 |
| Die-cut labels roll | 102mm x 50mm | 843 | White | RD-S03E1 |
| Die-cut labels roll | 102mm x 152mm | 72 | White | RD-M03E1 |
| Die-cut labels roll | 102mm x 152mm | 281 | White | RD-S02E1 |
| Die-cut labels roll | 76mm x 26mm | 1564 | White | RD-S04E1 |
| Die-cut labels roll | 76mm x 44mm | 335 | White | RD-P09E1 |
| Die-cut labels roll | 51mm x 26mm | 1564 | White | RD-S05E1 |
| Die-cut labels roll | 51mm x 26mm | 450 | White | RD-Q04E1 |



TD-4T Accessories and consumable supplies

TD-4T Additional options

PA-LP-004 Label peeler*

TD-4420TN
TD-4520TN



PA-CU-003 Full and partial cutter*

TD-4420TN
TD-4520TN
TD-4650TNWB
TD-4750TNWB
TD-4650TNWBR*
TD-4750TNWBR*



PA-RH-001 External roll holder

TD-4420TN
TD-4520TN
TD-4650TNWB
TD-4750TNWB
TD-4650TNWBR
TD-4750TNWBR



* Not recommended for use with RFID tags

TD-4T Consumables

| Rolls | Size | Quantity | Colour | Item No |
|--|---------------|----------|--------|------------------|
| Uncoated thermal transfer die cut labels | 102mm x 74mm | 1,100 | White | BUS-1J074102-121 |
| Uncoated thermal transfer die cut labels | 102mm x 150mm | 550 | White | BUS-1J150102-121 |
| Coated thermal transfer die cut labels | 102mm x 74mm | 1,100 | White | BCS-1J074102-121 |
| Coated thermal transfer die cut labels | 102mm x 150mm | 550 | White | BCS-1J150102-121 |

| Ribbons | Width | Length | Substrate compatibilities | Item No |
|--------------------|-------------------|--------|--|---------------|
| Standard wax | 110mm / 4.33 inch | 300m | Coated/uncoated paper and tags, high gloss paper | BWS-1D300-110 |
| Premium wax | 110mm / 4.33 inch | 300m | Coated/uncoated paper and tags, high gloss paper, economy synthetics | BWP-1D300-110 |
| Standard wax/resin | 110mm / 4.33 inch | 300m | Coated/uncoated paper and tags, high gloss paper, economy synthetics | BSS-1D300-110 |
| Premium wax/resin | 110mm / 4.33 inch | 300m | Coated/uncoated paper and tags, high gloss paper, synthetics | BSP-1D300-110 |
| Standard resin | 110mm / 4.33 inch | 300m | Coated papers and tags, synthetics, textures | BRS-1D300-110 |
| Premium resin | 110mm / 4.33 inch | 300m | Economy and speciality synthetics | BRP-1D300-110 |

For additional consumable options please contact your Brother account manager.



brother
at your side

Contact:

www.brother.co.uk

enquiries@brother-uk.com

Brother UK Ltd.

Shepley Street, Audenshaw

Manchester, M34 5JD

Tel: +44 (0) 333 777 4444

All specifications correct at the time of printing (February 2020) and are subject to change. Brother is a registered trademark of Brother Industries Ltd. Brand product names are registered trademarks or trademarks of their respective companies.